

LAB | S71

Karri Monni | 2014



LAB

Karri Monni | 2014

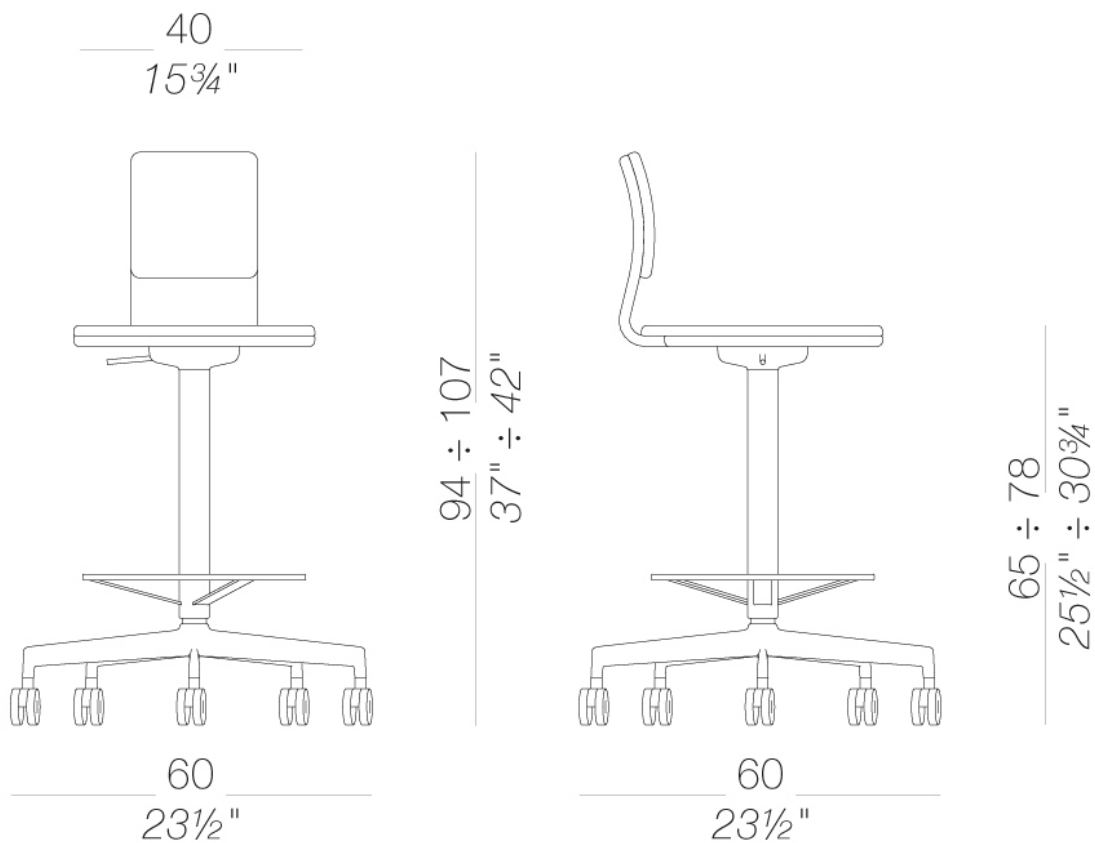
Dynamic and focused like a contemporary working day. With its backrest and height adjustment, the LAB stool has the “shape” to adapt itself to any working needs. A classic of industrial design, it features the latest colours and a modern profile.



| S71 stool with backrest and footrest H65 ÷ 78

Stool with swivel seat and adjustable height with die-cast aluminium base with footrest, sandblasted or powder coated, and self-braking castors. Seat and backrest in plywood upholstered with fire-retardant polyurethane foam and covered with fabric, soft leather or eco-leather. The back-rest is height adjustable.

TEST 1 IM - Hallingdal



upholstery



fabric
Main Line Flax -
Grade. B
57 Colors



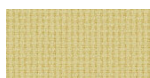
fabric
Blazer - Grade. C
86 Colors



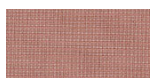
fabric
Chili - Grade. A
47 Colors



fabric
Umber - Grade. B
36 Colors



fabric
Nobel - Grade. C
30 Colors



fabric
Naveli - Grade. C
24 Colors



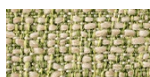
fabric
Fiocco - Grade. B
34 Colors



fabric
Atrium - Grade. C
16 Colors



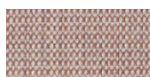
fabric
Panama - Grade. A
48 Colors



fabric
Sorrento - Grade. B
22 Colors



fabric
Hallingdal 65 -
Grade C
58 Colors



fabric
Canvas 2 - Grade C
45 Colors



fabric
Steelcut Trio 3 -
Grade D
54 Colors



fabric
Remix 3 - Grade C
72 Colors



fabric
Fiord 2 - Grade C
39 Colors



fabric
Divina MD - Grade D
27 Colors



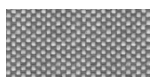
fabric
Divina Melange 3 -
Grade D
38 Colors



fabric
Tonica 2 - Grade C
39 Colors



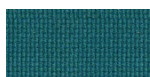
fabric
Medley - Grade A
37 Colors



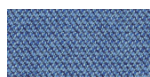
fabric
Maya - Grade A
43 Colors



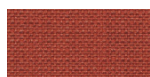
fabric
Jet - Grade A
66 Colors



fabric
Lapalma Smart -
Grade C
18 Colors



fabric
Capture - Grade B
43 Colors



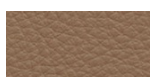
fabric
Crisp - Grade B
40 Colors



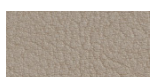
fabric
Iris - Grade B
24 Colors



fabric
Steelcut 3 - Grade D
40 Colors



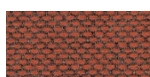
soft-leather
Soft-leather
17 Colors



ecoleather
Valencia - Grade B
66 Colors



fabric
Grain - Grade. B
50 Colors

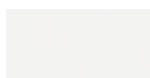


fabric
Re-wool - Grade C
21 Colors

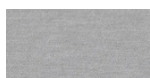
frame



powder coating
black
1 Colors



powder coating
white
1 Colors



metal
aluminium
1 Colors

consult the portfolio for the range of colors, fabrics, eco-leather, soft-leather.

use and maintenance instructions

Clean all parts in wood, leather, fabric and metal with a damp cloth or a diluted neutral cleaner. Do not use cleaners with alcohol, bleach, solvent or abrasive products. Any liquid spilt on the product must be wiped up immediately. When lifting or moving the product, hold it on the structure and not under the seat. The product should not be subjected to unbalanced weights, as it is designed for a proper rest on the foothold (on four legs or on the base). Our company relieves from any responsibility in case of damage caused to fragile floors. Avoid any improper use of the product: do not step on the product, on the footrest or on the armrests. Avoid any movements that could compromise the proper functionality of the product or the safety of the users. Wood and leather, being natural materials, could be easily damaged. Small impurities or imperfections are within quality standard range. Do not expose the product to weather conditions or atmospheric agents, nor to heat sources over 40°C. Also products for outdoor use could be afflicted by atmospheric agents. The product could undergo possible exterior changes due to particular exposure to heat, humidity and saltiness. An appropriate and frequent maintenance and cleaning of the product enhances its durability. The product could change colour and shade, if exposed to direct sunlight. Maintenance has to be carried out by experienced staff. Dispose of the package only after assembling the product, in order to avoid the loss of ironmongery and components. Once the product has been dismantled, the product itself or its components must be given to the public garbage disposal system, according to the legislation in force.